

KVT 5000 RPE Generator

Brand: KVT
Type: 5000 RPE
Capacity: 500 kVA (400 kW)
Y.o.b. 2006
Voltage: 400/230 V
Temperature: 27°C
Sizes: 5800x1600x2150 mm (LxWxH)
Weight: 6.500 kg

Diesel Engine:

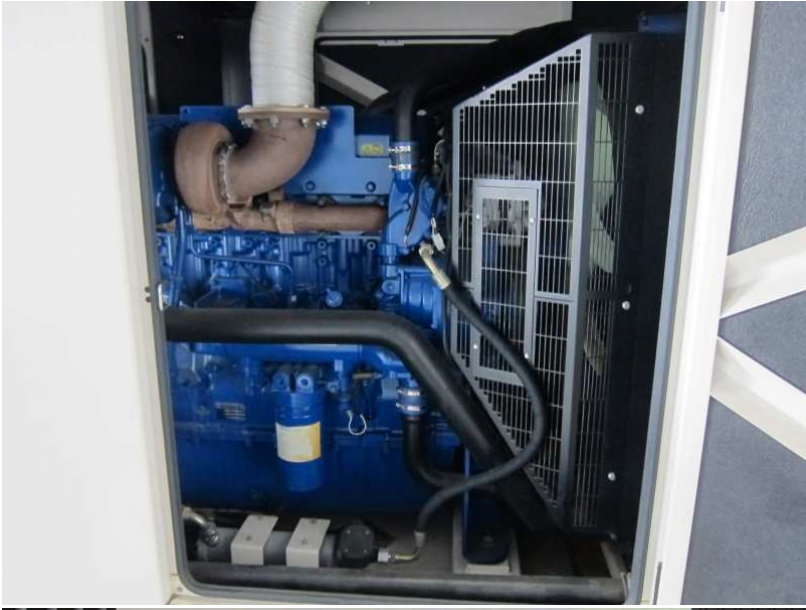
Brand: Perkins
Type: 2806C-E16TAG2
Capacity: 483 kW at 1500 RPM

Generator:

Brand: Leroy Somer
Type: LL6134F
Capacity: 500 kVA











MANUFACTURED IN THE UNITED KINGDOM BY FG WILSON (ENGINEERING) LTD FOR

KEMPER EN VAN TWIST DIESEL B.V.

PO Box 156, 3300 AD Dordrecht - Holland
Phone +31 (0) 78 6326600-Fax 6136746-E-mail kv1@kv1.nl

GENERATING SET		GENERATORSET	
MODEL	P500P1	MODEL	
SERIAL NUMBER	FGWRPES1JLPS04481	SERIENUMMER	
YEAR OF MANUFACTURE	2006	BOLWJAAR	
RATED POWER - PRIME	500 0 KVA	STANDAARD VERMOGEN	
	400 0 KW		
	0.80 COS Ø		
RATED VOLTAGE	400/230 V	STANDAARD SPANNING	
PHASE	3	FASE	
RATED FREQUENCY	50 Hz	STANDAARD FREQUENTIE	
RATED CURRENT	722 A	STANDAARD STROOM	
RATED R.P.M	1500	STANDAARD TOERENTAL	
MAXIMUM ALTITUDE*	152.4 m	MAX. OPSTELLINGSHOOGTE	
MAXIMUM AMBIENT TEMPERATURE*	27 °C	MAXIMUM OMGEVINGS TEMPERAATUUR	
MASS	5500 Kg	GEWICHT	
SALES ORDER REFERENCE	5019554-10	CLUTCH	
ALTERNATOR CONNECTION	S_STAR	GENERATOR SCHAKELING	
RATING ISO 8528-3	BR	TOELAATBARE BELASTING	
ALTERNATOR ENCLOSURE	IP23	GENERATOR BEKLEEDING	
INSULATION CLASS	H	ISOLATIE KLASSE	
EXCITATION VOLTAGE	33 V	BEKRACHTIGINGS SPANNING	
EXCITATION CURRENT	3 A	BEKRACHTIGINGS STROOM	
A.V.R	R448C	AUTOMATISCHE SPANNINGS REGELAAR	
MADE IN U.K			

*GENERATOR SET IS DESIGNED TO OPERATE IN AMBIENT TEMPERATURES UP TO 60°C AND AT HIGHER ALTITUDES. PLEASE CONSULT FACTORY FOR OUTPUTS AVAILABLE